

# ROCKWOOD

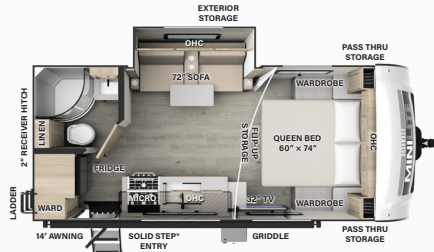
T  
R  
A  
V  
E  
L  
  
T  
R  
A  
I  
L  
E  
R  
S



**FOREST RIVER**

[FORESTRIVERINC.COM](http://FORESTRIVERINC.COM)

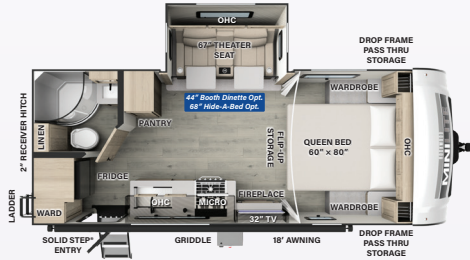
# MINI LITE FLOORPLANS



**2109S**

LENGTH: 22' 4" WIDTH: 8' HEIGHT: 10' 3" HITCH: 557 AXLE: 3877

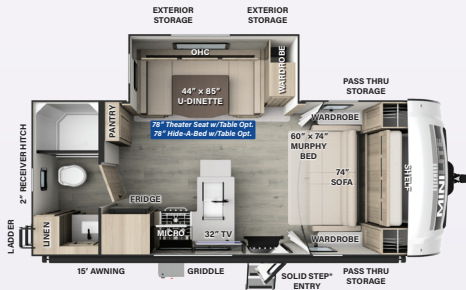
UVW: 4493 CCC: 1344 **F** 54 GAL **G** 29 GAL **B** 29 GAL



**2205S**

LENGTH: 23' 10" WIDTH: 8' HEIGHT: 10' 11" HITCH: 634 AXLE: 4439

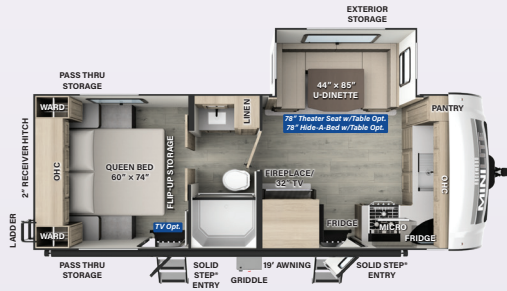
UVW: 5132 CCC: 1662 **F** 54 GAL **G** 29 GAL **B** 29 GAL



**NEW!**  
**2214S**

LENGTH: 23' 10" WIDTH: 8' HEIGHT: 10' 11" HITCH: 748 AXLE: 4468

UVW: 5275 CCC: 1550 **F** 54 GAL **G** 29 GAL **B** 29 GAL



**NEW!**  
**2506FK**

LENGTH: 25' 11" WIDTH: 8' HEIGHT: 10' 11" HITCH: 820 AXLE: 4810

UVW: 5689 CCC: 2131 **F** 54 GAL **G** 58 GAL **B** 29 GAL



## SUPERIOR CONSTRUCTION

1. Complete **Composite** Wall Construction
2. Fully **Laminated** Walkable Roof
3. 6-Sided Full-Aluminum Frame
4. Aluminum Truss Roof Bracing<sup>1</sup>
5. 5/8" Tongue & Groove Plywood Floor
6. Aluminum Floor Joists
7. Painted Fiberglass Front Cap w/ Clear Coat<sup>2</sup>
8. Automotive Glass Windshield

## STANDARD FEATURES

9. 200W Solar Panel with 1800W Inverter & 30 AMP Charge Controller
10. Back-Up Camera Prep
11. Maxxair Fan with Cover
12. Winegard Air 360+ Prepped for Wi-Fi
13. Frameless Windows
14. Key-Alike Lock System
15. Slam Baggage Doors
16. PSX2 Power Stabilizers<sup>3</sup>
17. Additional Solar Prep
18. Double Battery Boxes
19. Double 30 Lb. LP Tanks

## SAFETY STANDARDS

20. Nitrogen-Filled Goodyear Endurance Tires w/ Balancing Beads
21. TST Tire Pressure Monitoring
22. Dexter® Torflex® Axles
23. MORryde Strut Assist Steps<sup>4</sup>

## CLIMATE PROTECTION PACKAGE

24. 12V Thermostat-Controlled Heated Tanks
25. Radiant Foil in Front Cap, Underbelly, and Slides

## OPTIONAL FEATURES

26. Power Package *(Select Models)*<sup>5</sup>
27. Additional 200W Solar Panel
28. 3.0 Auto-Leveling<sup>1</sup>
29. Slide Toppers
30. 2nd A/C *(Soft Start)*<sup>5</sup> Where Applicable<sup>5</sup>

<sup>1</sup> Ultra Lite Only. <sup>2</sup> Ultra Lite Only: Mini Lite comes with a fiberglass front cap.  
<sup>3</sup> Ultra Lite Only; Optional on Mini Lite. <sup>4</sup> N/A Mini Lite 2109S <sup>5</sup> Mini Lite Only.

## Slide Options

Model	Theater Seat	Hide-A-Bed	Table & Chairs	Booth Dinette
Mini Lite Travel Trailers				
2109S				
2205S	Standard	✓		✓
2214S	✓	✓		Standard U-Dinette
2506FK	✓	✓		Standard U-Dinette
2509S	✓	✓		Standard U-Dinette
2511S	Standard	✓		✓
2513S	Standard	✓		✓
2515S	Standard	✓		
2516S	Standard	✓		
2517S	✓	✓		Standard
2518S	Standard	✓		
2519S	✓	✓		Standard U-Dinette
2520BH	✓	✓		Standard U-Dinette
Ultra Lite Travel Trailers				
2606WS	Standard	✓	✓	Standard
2608BS	Standard	✓	✓	Standard
2614BS	Standard	✓	✓	Standard
2616BH	Standard	✓		✓
2618RD	Standard	✓		
2619FK	Standard	✓		
2706BH	Standard	✓	✓	Standard U-Dinette
2906BS	Standard		✓	Standard
2908RL		Standard		
2918BH	Standard	✓		

# ROCKWOOD MINILITE ULTRA LITE

Rockwood's Mini Lite and Ultra Lite provide one of the best values in the lightweight travel trailer market. Both models are built with superior build quality that exceed Rockwood's reputation.

## POWER PACKAGE

### Includes:\*

- 15A Receptacle Charging w/ Combimaster Power Sharing Feature
- 3000W Inverter/Charger w/160A Charging Capacity
- 13,500 BTU Soft Start Power Saver A/C
- 5" Touchscreen monitor
- 50A DC/DC Charger —New!
- 460Ah Mastervolt Lithium Battery
- Integrated 60A MPPT Charge Controller
- (5) 200W GoPower® Solar Panels
- Centralized System Disconnect Switch

\*Power Package available in Select Mini Lite Models Only.



Look for the Power Package Icon Next to the Floorplan.

## WeRV App Control

Your RV is equipped with Lippert™ One Control®. This WiFi app-based interface provides comfort and convenience to control and monitor your RV's functions. Visit [lippert.com/onecontrol](http://lippert.com/onecontrol) for a complete list of capabilities.



**Download Today!**

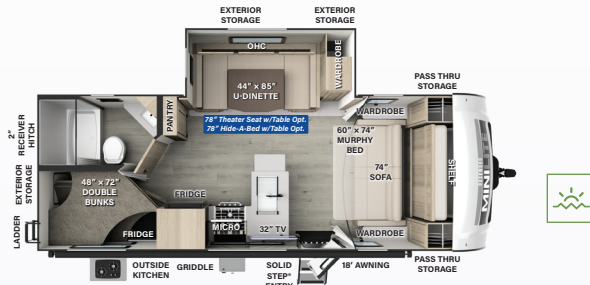


Apple and App Store are registered trademarks of Apple Inc. Google Play and the Google Play logo are trademarks of Google LLC.



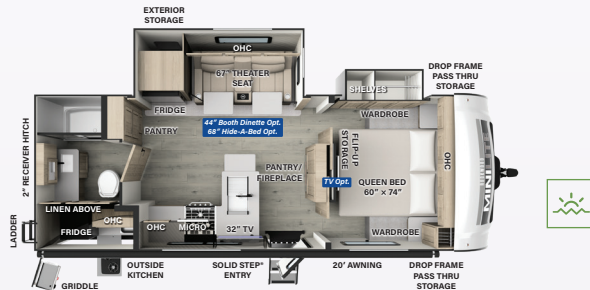
Power Package Option Available

## MINI LITE FLOORPLANS



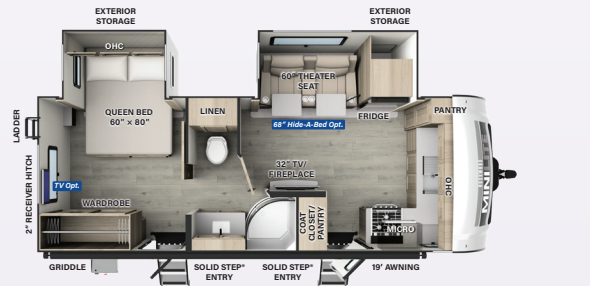
**2509S**

LENGTH: 25' 11" WIDTH: 8' HEIGHT: 10' 11" HITCH: 773 AXLE: 4667  
UVW: 5499 CCC: 1434 **F** 54 GAL **G** 29 GAL **B** 29 GAL



**2513S**

LENGTH: 25' 10" WIDTH: 8' HEIGHT: 10' 11" HITCH: 660 AXLE: 5252  
UVW: 5971 CCC: 1689 **F** 54 GAL **G** 29 GAL **B** 29 GAL



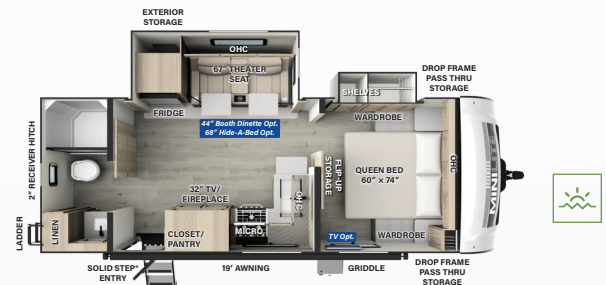
**2516S**

LENGTH: 25' 11" WIDTH: 8' HEIGHT: 10' 11" HITCH: 778 AXLE: 5340  
UVW: 6177 CCC: 1601 **F** 54 GAL **G** 58 GAL **B** 29 GAL



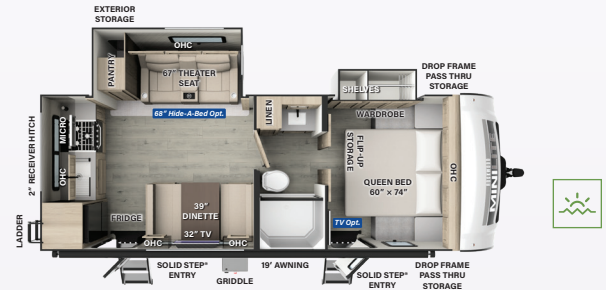
**2518S**

LENGTH: 25' 10" WIDTH: 8' HEIGHT: 10' 11" HITCH: 645 AXLE: 4915  
UVW: 5619 CCC: 2026 **F** 54 GAL **G** 58 GAL **B** 29 GAL



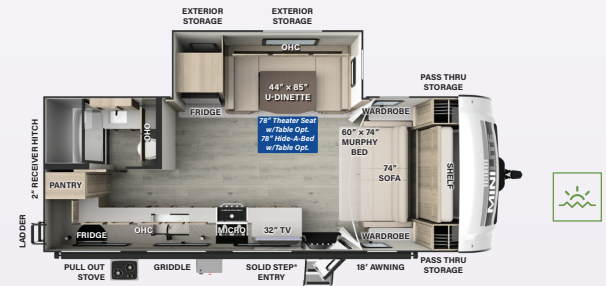
**2511S**

LENGTH: 25' 10" WIDTH: 8' HEIGHT: 10' 11" HITCH: 697 AXLE: 5000  
UVW: 5756 CCC: 1941 **F** 54 GAL **G** 58 GAL **B** 29 GAL



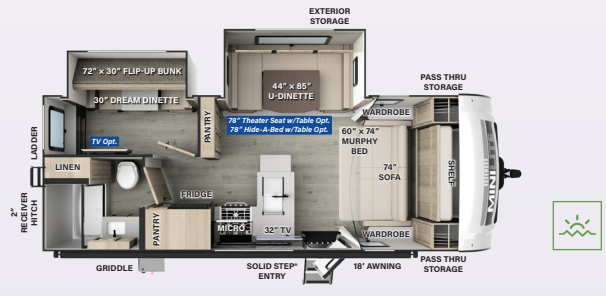
**2515S**

LENGTH: 25' 10" WIDTH: 8' HEIGHT: 10' 11" HITCH: 681 AXLE: 5112  
UVW: 5852 CCC: 1829 **F** 54 GAL **G** 58 GAL **B** 29 GAL



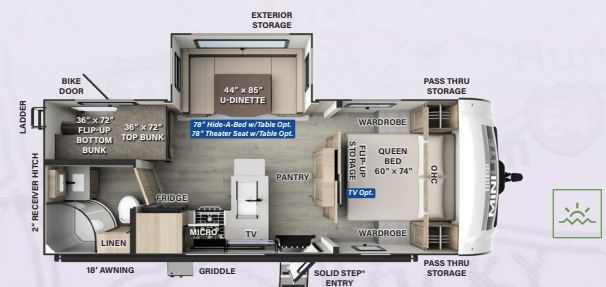
**2517S**

LENGTH: 25' 11" WIDTH: 8' HEIGHT: 10' 11" HITCH: 615 AXLE: 5100  
UVW: 5774 CCC: 1841 **F** 54 GAL **G** 29 GAL **B** 29 GAL



**NEW!**  
**2519S**

LENGTH: 25' 10" WIDTH: 8' HEIGHT: 10' 11" HITCH: 660 AXLE: 5290  
UVW: 6009 CCC: 1651 **F** 54 GAL **G** 29 GAL **B** 29 GAL



**NEW!**  
**2520BH**

LENGTH: 25' 10" WIDTH: 8' HEIGHT: 10' 11" HITCH: TBD AXLE: TBD  
UVW: TBD CCC: TBD **F** 54 GAL **G** 29 GAL **B** 29 GAL

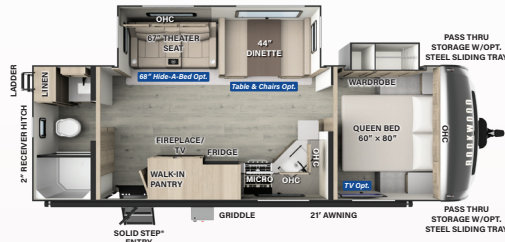
For half a century, we have proudly and passionately crafted recreational vehicles that have become synonymous with quality, innovation, and adventure.

Since our establishment in 1974, we've committed ourselves to putting quality first and doing things right, every step of the way.

**50**  
CELEBRATING  
YEARS

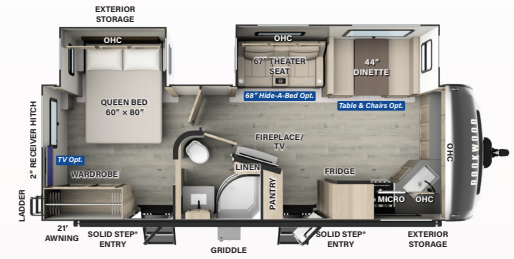
**ROCKWOOD**  
SINCE 1974





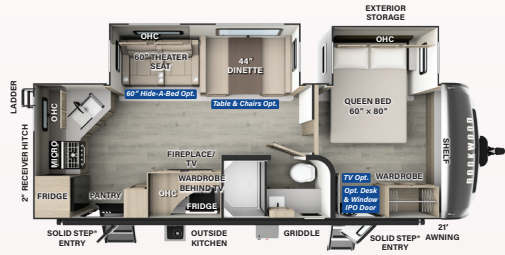
**2606WS**

LENGTH: 29' 9" WIDTH: 8' HEIGHT: 11' 2" HITCH: 840 AXLE: 5742  
UWV: 6641 CCC: 1999 **F** 54 GAL **G** 90 GAL **B** 45 GAL



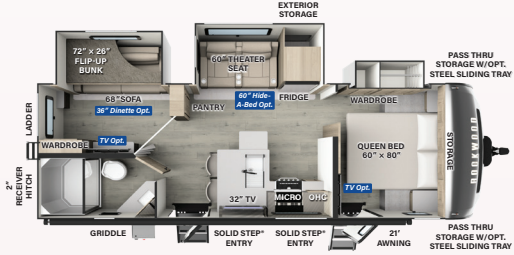
**2608BS**

LENGTH: 29' 8" WIDTH: 8' HEIGHT: 11' 2" HITCH: 946 AXLE: 5831  
UWV: 6836 CCC: 1910 **F** 54 GAL **G** 90 GAL **B** 45 GAL



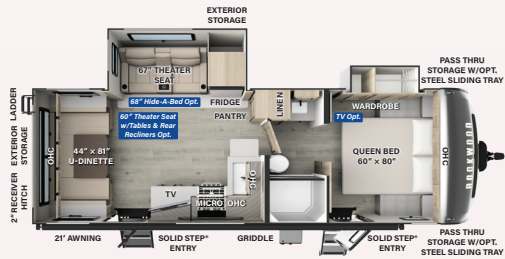
**2614BS**

LENGTH: 29' 9" WIDTH: 8' HEIGHT: 11' 2" HITCH: 796 AXLE: 6133  
UWV: 6988 CCC: 1608 **F** 54 GAL **G** 90 GAL **B** 45 GAL



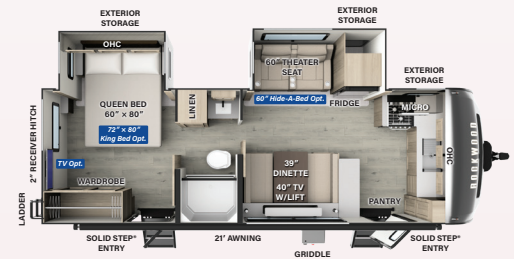
**2616BH**

LENGTH: 29' 9" WIDTH: 8' HEIGHT: 11' 3" HITCH: 938 AXLE: 6137  
UWV: 7134 CCC: 1604 **F** 54 GAL **G** 90 GAL **B** 45 GAL



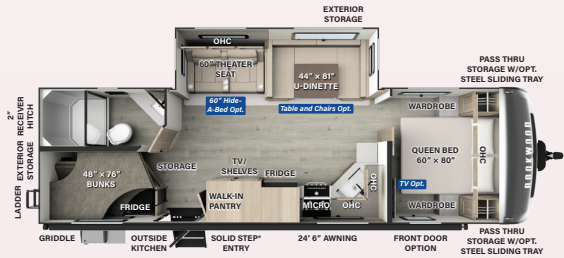
**NEW!**  
**2618RD**

LENGTH: 29' 9" WIDTH: 8' HEIGHT: 11' 3" HITCH: 716 AXLE: 5734  
UWV: 6509 CCC: 2007 **F** 54 GAL **G** 45 GAL **B** 45 GAL



**NEW!**  
**2619FK**

LENGTH: 29' 8" WIDTH: 8' HEIGHT: 11' 3" HITCH: 825 AXLE: 5950  
UWV: 6834 CCC: 1791 **F** 54 GAL **G** 90 GAL **B** 45 GAL



**2706BH**

LENGTH: 32' 10" WIDTH: 8' HEIGHT: 11' 2" HITCH: 790 AXLE: 6210  
UWV: 7059 CCC: 1531 **F** 54 GAL **G** 90 GAL **B** 45 GAL



**2906BS**

LENGTH: 35' 5" WIDTH: 8' HEIGHT: 11' 3" HITCH: 1100 AXLE: 7400  
UWV: 8559 CCC: 1341 **F** 54 GAL **G** 45 GAL **B** 45 GAL



**2908RL**

LENGTH: 35' 5" WIDTH: 8' HEIGHT: 11' 2" HITCH: 930 AXLE: 7295  
UWV: 8284 CCC: 1446 **F** 54 GAL **G** 45 GAL **B** 45 GAL



**NEW!**  
**2918BH**

LENGTH: 35' 5" WIDTH: 8' HEIGHT: 11' 2" HITCH: 905 AXLE: 6805  
UWV: 7769 CCC: 2131 **F** 54 GAL **G** 90 GAL **B** 90 GAL



# 50

CELEBRATING  
YEARS

ROCKWOOD  
SINCE 1974

## Rockwood Warranty. Our Promise.

FOR DETAILS ON ROCKWOOD'S COMPLETE WARRANTY PROGRAM, SEE YOUR ROCKWOOD DEALER.

When it comes to backing products with the same quality and commitment it does when it begins the manufacturing process, the only name you have to remember when you're looking for a recreational vehicle is Rockwood. Rockwood offers the following additional limited warranties to the original purchasers. Consult written warranty for details.

**1** Limited Lifetime roofing warranty.\*

\*Lifetime warranty is limited to original owner

**2** Two-year fiberglass warranty.

**3** Ten-year Torflex® axle warranty.

**4** One-year bumper to bumper warranty.

### Specification Definitions

**GVWR (Gross Vehicle Weight Rating):** is the maximum permissible weight of the unit when fully loaded. It includes all weights, inclusive of all fluids, cargo, optional equipment and accessories. For safety and product performance do NOT exceed the GVWR.

**GAWR (Gross Axle Weight Rating):** is the maximum permissible weight, including cargo, fluids, optional equipment and accessories that can be safely supported by a combination of all axles.

**UVW (Unloaded Vehicle Weight):** is the typical weight of the unit as manufactured at the factory. It includes all weight at the unit's axle(s) and tongue or pin and LP Gas. The UVW does not include cargo, fresh potable water, additional optional equipment or dealer installed accessories.

**CCC (Cargo Carrying Capacity):** is the amount of weight available for fresh potable water, cargo, additional optional equipment and accessories. CCC is equal to GVWR minus UVW. Available CCC should accommodate fresh potable water (8.3 IWW per gallon). Before filling the fresh water tank, empty the black and gray tanks to provide for more cargo capacity.

Each Forest River RV is weighed at the manufacturing facility prior to shipping. A label identifying the unloaded vehicle weight of the actual unit and the cargo carrying capacity is applied to every Forest River RV prior to leaving our facilities.

The load capacity of your unit is designated by weight, not by volume, so you cannot necessarily use all available space when loading your unit.

All information contained in this brochure is believed to be accurate at the time of publication. However, during the model year, it may be necessary to make revisions and Forest River, Inc., reserves the right to make all such changes without notice, including prices, colors, materials, equipment and specifications as well as the addition of new models and the discontinuance of models shown in this brochure. Therefore, please consult with your Forest River dealer and confirm the existence of any materials, design or specifications that are material to your purchase decision. © 2024 Rockwood RV, a Division of Forest River, Inc., a Berkshire Hathaway Company. All Rights Reserved.

08/16 Rockwood



#### PRE-DELIVERY INSPECTION FACILITY

20,000 square feet of quality assurance. The bare essentials for a premium product. This state-of-the-art facility gives immediate daily feedback to production for quality assurance in every unit built.



#### 24/7 EMERGENCY ROADSIDE ASSISTANCE WITH VEHICLE PURCHASE\*

TOWING  
JUMP-STARTS  
TIRE CHANGES  
FLUID DELIVERY  
LOCKOUT  
SERVICE

WINCH-OUT  
MOBILE MECHANIC  
TECHNICAL  
SUPPORT  
DEALER LOCATOR  
SERVICES

**SPECIALIZED  
DISPATCH SERVICES**

\*VALID FOR 1 YEAR FROM DATE OF PURCHASE



RV WITH US



@RockwoodRVs

#### FOREST RIVER OWNER'S GUIDE

Now you can have your Owner's Manual with you wherever you are. Download our FREE App from the App Store or Google Play and you'll have the information right at your fingertips.



YOUR **ROCKWOOD** DEALER

1 Estimated Average based on standard build optional equipment



#### Learn More:

Scan this barcode using a QR reader on your smart phone to learn more about Forest River.



# ROCKWOOD

201 WEST ELM MILLERSBURG, IN 46543  
WWW.FORESTRIVERINC.COM/ROCKWOOD  
574.642.2640